

Molly's Magic & Fantasy Garden

Sarah Maxwell



Warm Version



Cool Version

Molly's Tote Quilt designed by: **Sarah Maxwell**

Tote Size: **27" x 27" x 3"**

Skill Level: **Confident Beginner**

andover . makower.uk

Free Pattern Download Available

1384 Broadway New York, NY 10018

Tel. (800) 223-5678 • andoverfabrics.com

Molly's Tote



Featuring Andover Fabrics new Collections: Molly's Magic & Fantasy Garden

Quilt designed by Sarah Maxwell

Tote finished 27" x 27" x 3"

Fabric Requirements (Cool Version)

Quilt		Yardage	Fabric
Fabric A	center panel	1 panel	1553-X*
Fabric B	inner border, handles	5/8 yard	1504-P
Fabric C	outer border	1 1/4 yards	1500-B
Fabric D	lining	1 3/4 yards	1501-B

You will also need:

- 2 yards of Fusible fleece

* Fantasy Garden Collection

Fabric Requirements (Warm Version)

Quilt		Yardage	Fabric
Fabric A	center panel	1 panel	1553-X*
Fabric B	inner border	3/8 yard	1501-E
Fabric C	outer border	1 1/4 yards	1500-E
Fabric D	lining	1 3/4 yards	1502-E
Fabric E	handles	3/8 yard	1504-E

You will also need:

- 2 yards of Fusible fleece

* Fantasy Garden Collection

Cool Tote Cutting Directions

Note: Read assembly directions before cutting patches. Borders are cut to exact length required plus 1/4" seam allowance. WOF designates the width of fabric from selvedge to selvedge (approximately 42" wide).

- Fabric A** Fussy Cut (1) 20 1/2" x 20 1/2" square centered on the panel.
- Fabric B** Cut (2) 2" x 20 1/2" strips.
Cut (2) 2" x 23 1/2" strips.
Cut (2) 4" x WOF strips.
- Fabric C** Cut (1) 30 1/2" x WOF strip. Sub-cut the strip into (1) 29" x 30 1/2" strip, (1) 4" x 30 1/2" strip and (1) 2 1/2" x 30 1/2" strip.
Cut (2) 4" x 23 1/2" strips.
- Fabric D** Cut (2) 29" x 30 1/2" strips.
- Fusible Fleece** Cut (2) 29" x 30 1/2" strips.

Warm Tote Cutting Directions

Note: Read assembly directions before cutting patches. Borders are cut to exact length required plus 1/4" seam allowance. WOF designates the width of fabric from selvedge to selvedge (approximately 42" wide).

- Fabric A** Fussy Cut (1) 20 1/2" x 20 1/2" square centered on the panel.
- Fabric B** Cut (2) 2" x 20 1/2" strips.
Cut (2) 2" x 23 1/2" strips.
- Fabric C** Cut (1) 30 1/2" x WOF strip. Sub-cut the strip into (1) 29" x 30 1/2" strip, (1) 4" x 30 1/2" strip and (1) 2 1/2" x 30 1/2" strip.
Cut (2) 4" x 23 1/2" strips.
- Fabric D** Cut (2) 29" x 30 1/2" strips.
- Fabric E** Cut (2) 4" x WOF strips.
- Fusible Fleece** Cut (2) 29" x 30 1/2" strips.

Molly's Tote

Making the Tote (both versions)

Note: Pay attention to the unit orientations when assembling the various components.

1. Sew (1) 2" x 20 1/2" Fabric B strip to each side of (1) 20 1/2" x 20 1/2" Fabric A panel. Sew (1) 2" x 23 1/2" Fabric B strip to the top and bottom of the Fabric A square to make 23 1/2" Unit 1 square (Diagram 1).

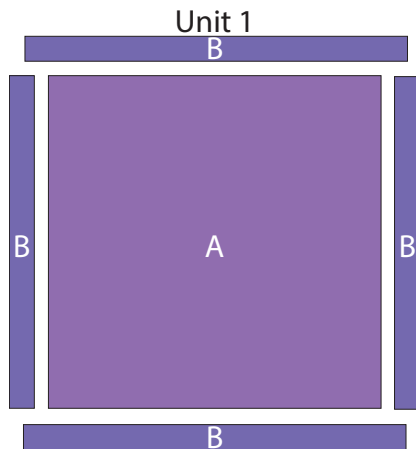


Diagram 1

2. Sew (1) 4" x 23 1/2" Fabric C strip to each side of the Unit 1 square. Sew (1) 2 1/2" x 30 1/2" Fabric C strip to the top of Unit 1 square. Sew (1) 4" x 30 1/2" Fabric C strip to the bottom of the Unit 1 square to make the 30 1/2" x 29" Unit 2 rectangle (Diagram 2).

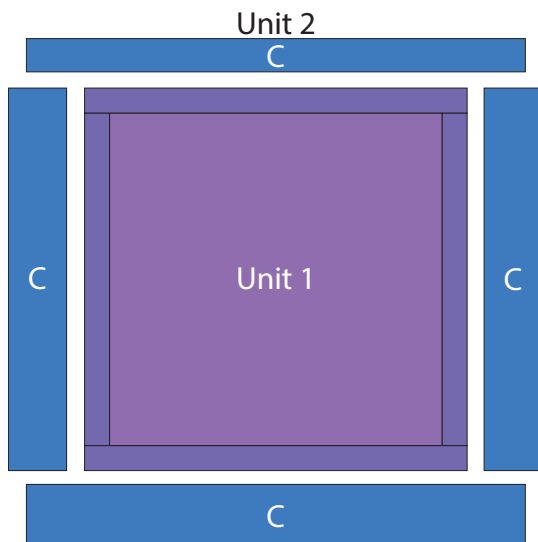


Diagram 2

3. Follow the manufacturer's instructions to press (1) 29" x 30 1/2" piece of fusible fleece to the wrong side of the Unit 2 rectangle to make the Unit 3 rectangle (Diagram 3).

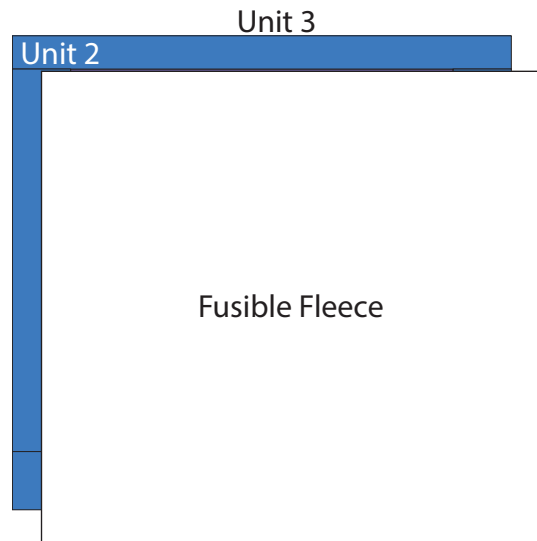


Diagram 3

4. Follow the manufacturer's instructions to press (1) 29" x 30 1/2" piece of fusible fleece to the wrong side of (1) 29" x 30 1/2" Fabric C strip to make the Unit 4 rectangle (Diagram 4).

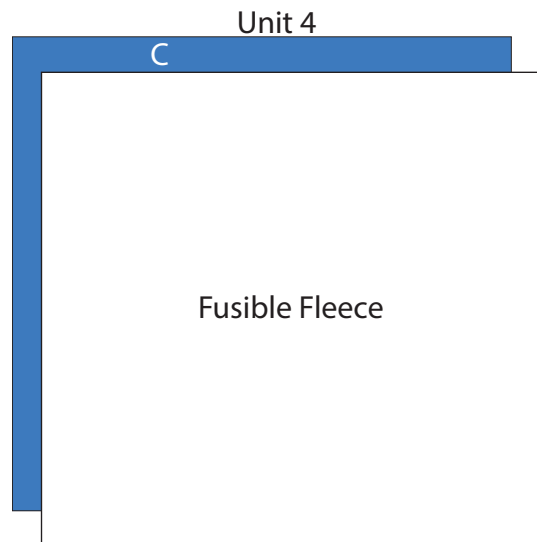


Diagram 4

Molly's Tote

5. Place the Unit 3 and Unit 4 pieces right sides together. Stitch down the two short sides and across the bottom (Diagram 5).

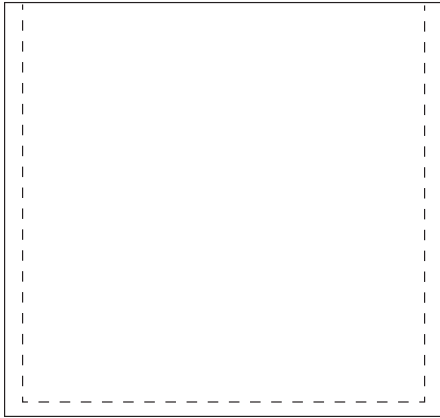


Diagram 5

6. Measure in from the side edge 2" and up from the bottom edge 2" on each of the bottom corners (Diagram 6). Cut out the square of fabric from each corner to make (1) Unit 5 rectangle (Diagram 7).

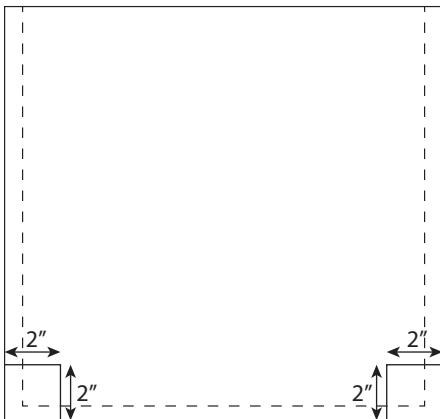


Diagram 6

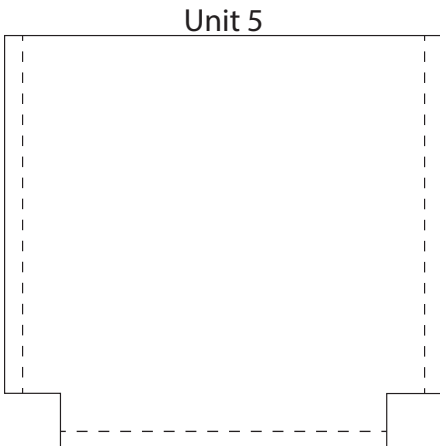


Diagram 7

7. Place the (2) 29" x 30 1/2" Fabric D strips right sides together. Stitch down the two short sides and across the bottom, leaving a 4" opening for turning (Diagram 8).

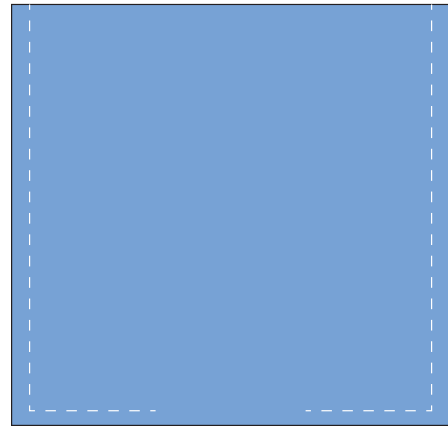


Diagram 8

8. Repeat Step 6 with the sewn Fabric D piece from Step 7 to make the Unit 6 rectangle (Diagram 9).

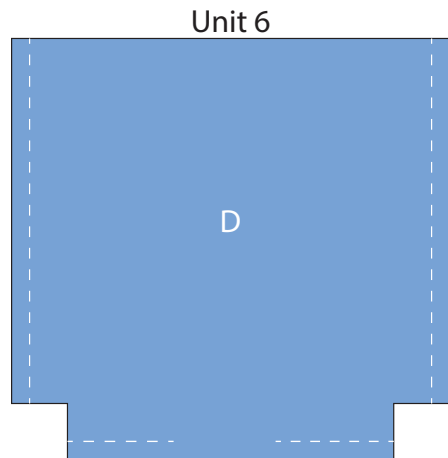


Diagram 9

9. Open one of the cut bottom corners on the Unit 5 rectangle and align the bottom seam with the side seam and sew the two edges together (Diagram 10). Repeat with the other bottom corner. Turn right sides out to make the Outer Tote.

10. Repeat Step 9 with the Unit 6 rectangle to make the Lining. **Do not turn right side out.**

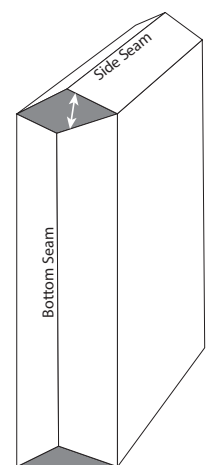
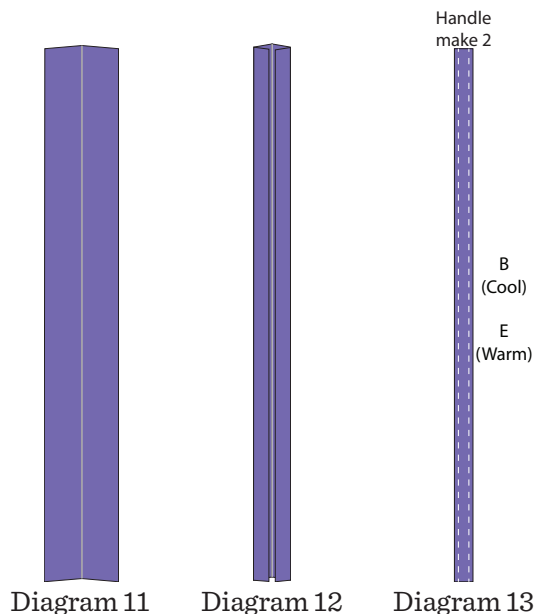


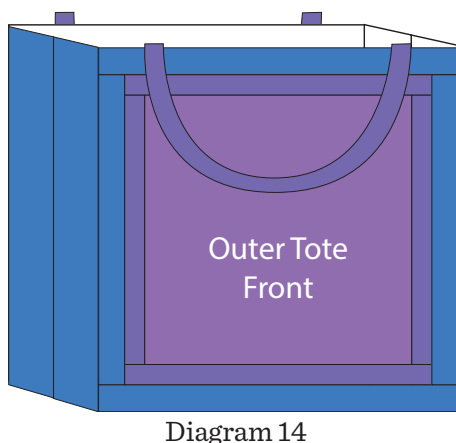
Diagram 10

Molly's Tote

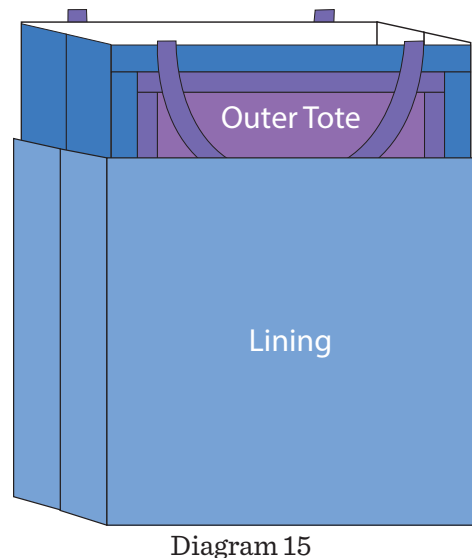
- 11.** Fold (1) 4" x WOF (Fabric B for Cool Version or Fabric E for Warm Version) strip in half lengthwise and press. Open the folded fabric and fold each long edge to the creased centerline and press (Diagram 11). Fold the pressed fabric in half again and press to make (1) 1" x WOF strip (Diagram 12). Top stitch down both long sides 1/8" in from the edge to make (1) Handle (Diagram 13). Repeat to make a second Handle.



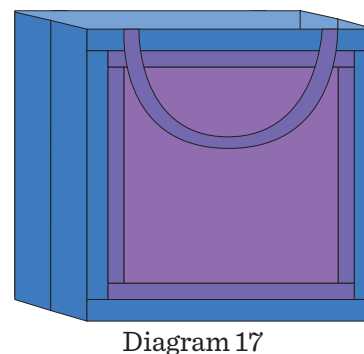
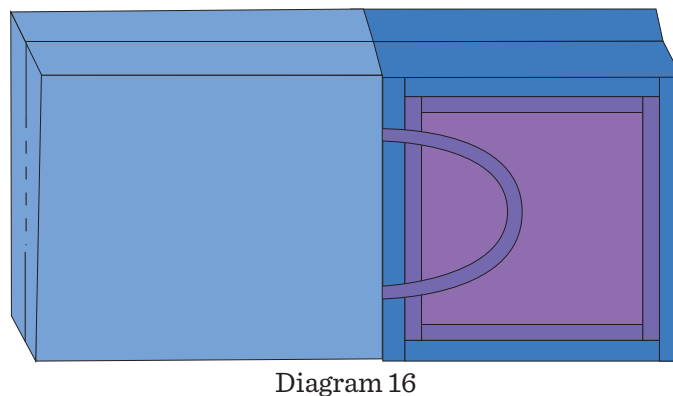
- 12.** Cut the (2) Handles to the desired length.
- 13.** Pin (1) Handle to the front of the Outer Tote Front measuring 4" in from each side edge (Diagram 14). Repeat with the second handle and Outer Tote Back. *Note: Make sure the handles are hanging down the right side of the bag while assembling.*



- 14.** Place the Outer Tote with Handles right sides together with the Lining, aligning the top raw edges of the Outer Tote, Handles and Lining, and pin together (Diagram 15). Sew the Lining and Outer Tote together around the top edge, reinforcing the stitching at each Handle.

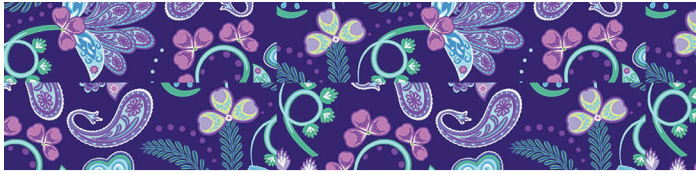


- 15.** Turn the Outer Tote and Lining right side out through the opening in the lining. Press as needed and top stitch the opening closed (Diagram 16). Put the Lining into the Outer Tote, aligning the sides and bottom. Press to complete the Tote (Diagram 17).



Molly's Magic & Fantasy Garden

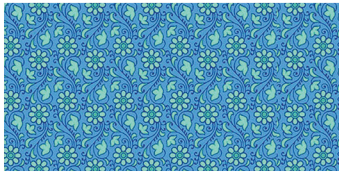
Sarah Maxwell



1500-B 1 1/4 yds (cool version)



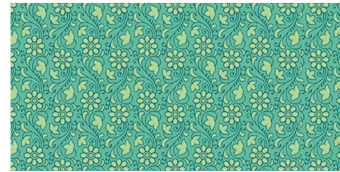
1500-E 1 1/4 yds (warm version)



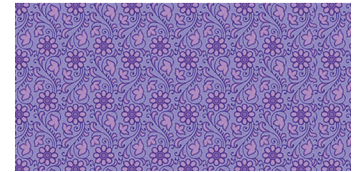
1501-B 1 3/4 yds (cool version)



1501-E 3/8 yd (warm version)



1501-G



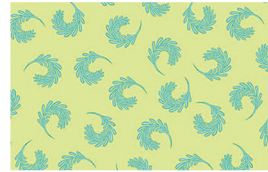
1501-P



1502-B



1502-E 1 3/4 yds (warm version)



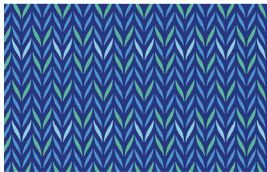
1502-G



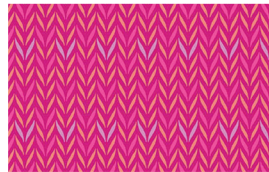
1502-O



1502-P



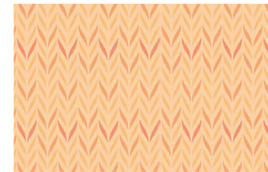
1503-B



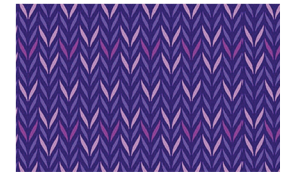
1503-E



1503-LE



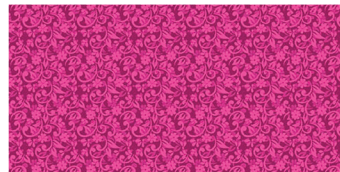
1503-O



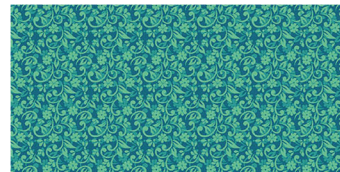
1503-P



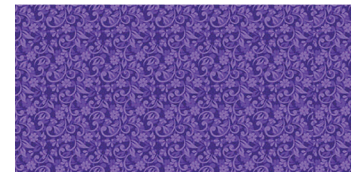
1504-B



1504-E

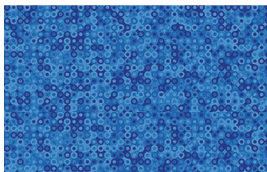


1504-G



1504-P

5/8 yd (cool version)



1505-B



1505-E



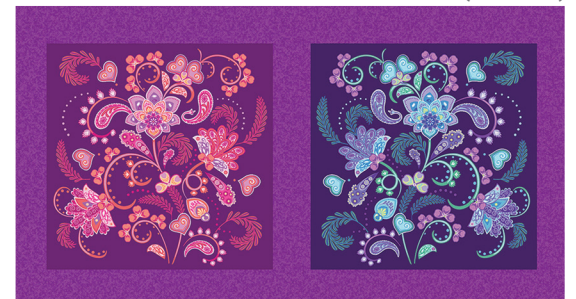
1505-G



1505-L



1505-P



1553-X

1 panel (both versions)

Bolts needed to cut project kits: 15 yds = 1 bolt